



ePlan Takeoff

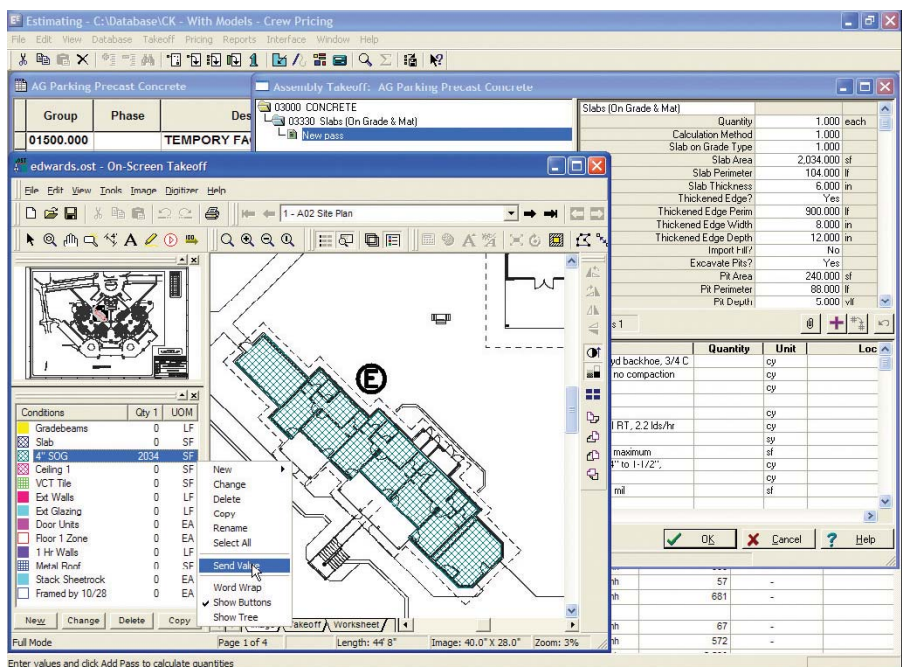
Connecting Timberline® Office estimating software with On Center's On-Screen Takeoff™ application, Timberline Office ePlan Takeoff lets you generate counts and quantity takeoffs directly from electronic drawings for instant use in your estimates.

ePlan Takeoff gives you the ability to quickly transfer project dimensions including lengths, areas, and volumes. It streamlines takeoff, provides a takeoff audit trail, and lets you create accurate estimates without ever needing to pore over bulky blueprints.

ePlan Takeoff is a part of Timberline Office, fully integrated software created to streamline work and connect the people you depend on to build your business.

Features and efficiencies

- Receive takeoff values from your digital plans and send those values directly to an estimate.
- Associate estimates with digital plans stored in a variety of file formats. These include CAD formats such as DWG and DXF, plus JPEG, BMP, TIFF, and PDF, as well as the On-Screen Takeoff format, the Dodge plan format, and standard government file formats, including the Corps of Engineers.
- Save digital plan quantities and images to the dimensions list window to use later.
- Recall the last perimeter you digitized from an estimating spreadsheet quantity cell or from the item or assembly takeoff window.
- Access your On-Screen Takeoff values and images while you review assemblies.



Send values from On-Screen Takeoff electronic plans directly to a Timberline Office estimating spreadsheet.

TIMBERLINE.
a Best Software company

800.628.6583 | Fax 888.477.0371 | timberline.com

TIMBERLINE is a registered Mark of Timberline Software Corporation. All other trademarks or registered trademarks are the property of their respective holders.

04/04